

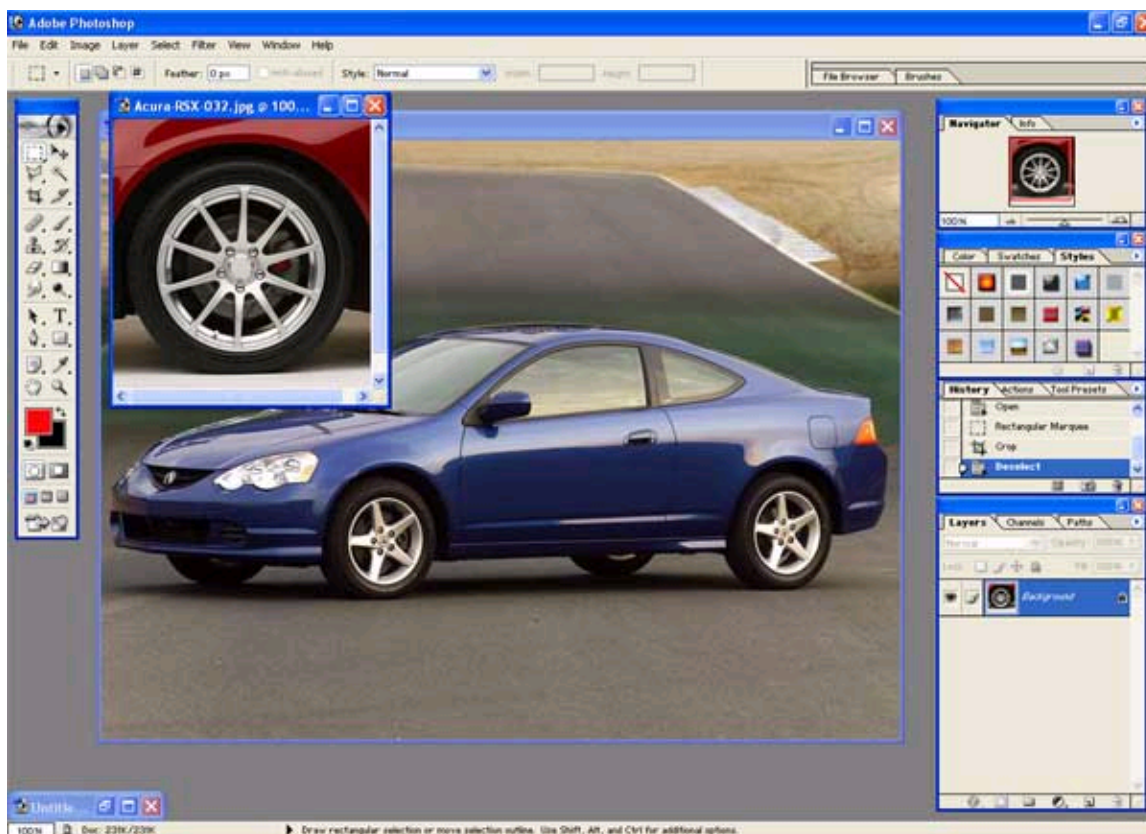


## Changing Rims Tutorial

This tutorial will show you how to change your ordinary rims and put on a different set of tuner wheels.

### Step 1

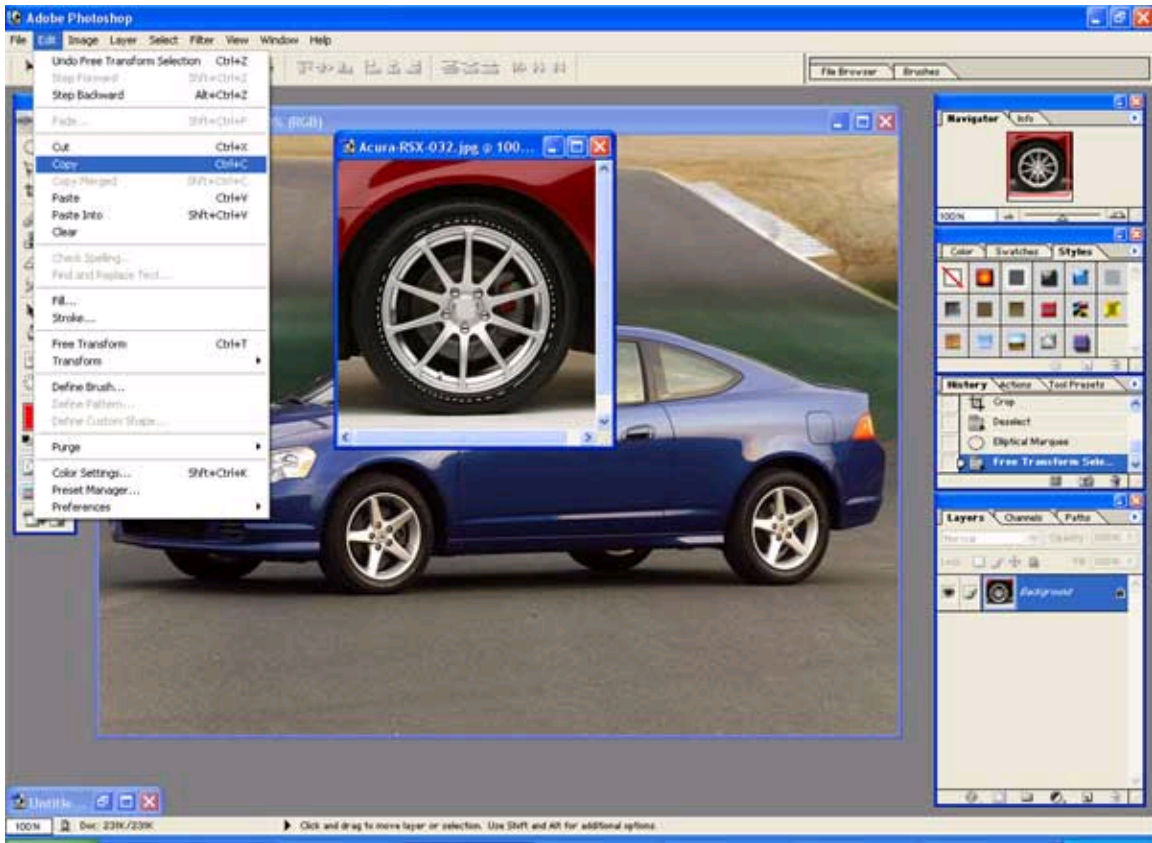
**First we will need a host car. In this case it is the Acura RSX. Next we will need a new Rim to put on our Acura. Try to make sure the Rim you are taking is roughly the same angle. If not no big deal we can use the distort, free transform and perspective tool.**



### Step 2

**Use the elliptical marquee tool and select the rim.**

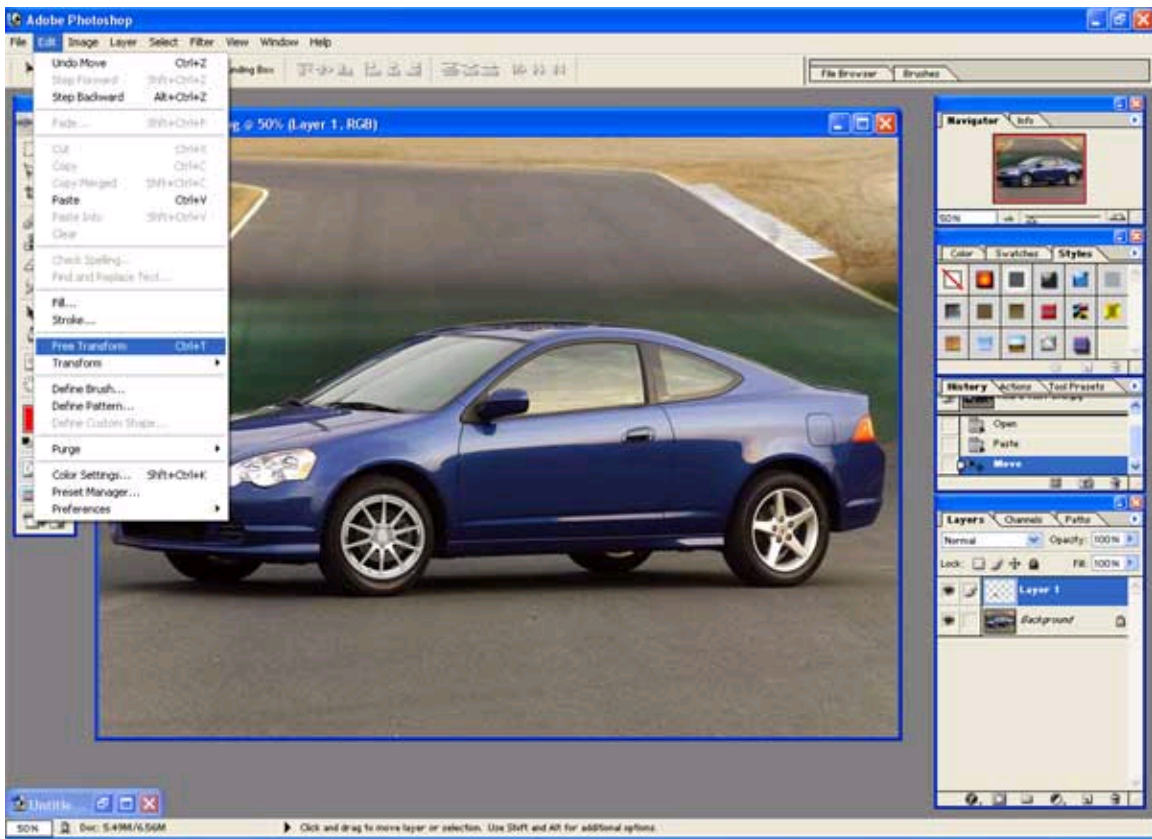
**Now choose edit, copy.**



### Step 3

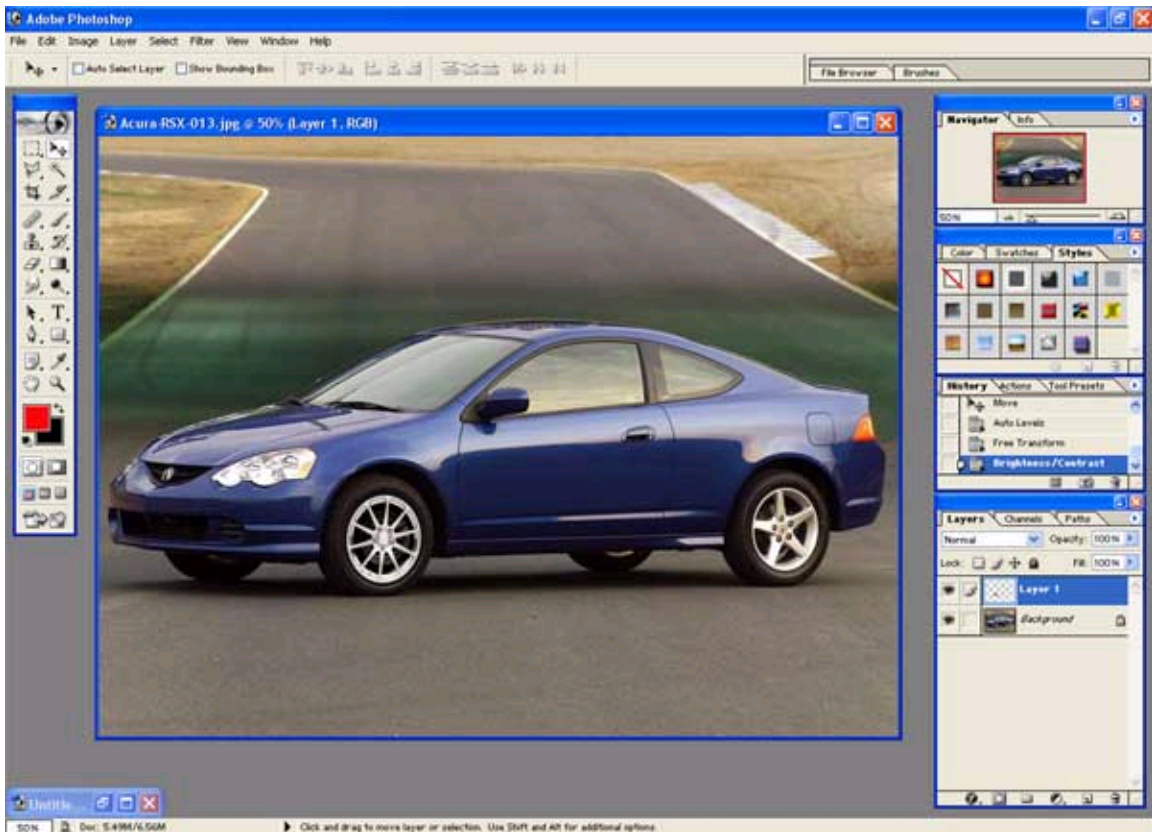
**Choose edit, paste on the image of the car your working on. It should now paste the rim onto the sheet your working on.**

**Click on edit, Free transform. You will be able to move the rim to its desired position and make it smaller if you copied a huge pic of a rim. You can also angle it and distort it to fit.**



### Step 4

Depending on the lighting on the rim in question you may want to use the auto levels tool or even play with the brightness and contrast. In the end it should look something like this.



**PHOTOSHOPCHOP.COM**